

By: RJ Korvemaker

Ring sizes: This tutorial is made with; 20awg (0.8mm WD), 4.0mm ID rings (AR 5.0).

However any rings with an AR between 3.8 and 5.3 tend to work for this weave.

A special note, AR's between 3.8 -4.8 will cause this weave to look more rectangular.

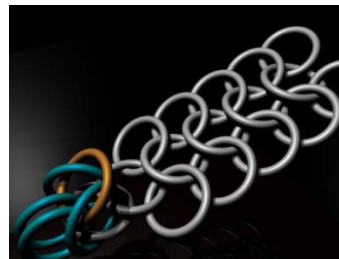
1. Start by creating a length of European 4 in 1. It should be longer than what you want your finished piece to be. This weave will shrink as its being woven. Have the rings oriented down, like in the picture.



2. Fold the bottom four rings, colored blue, down. So that the result looks like this;



3. Add a new ring through the 4 on the bottom.



4. Fold the next two side rings, again colored blue, and add another new ring, colored gold, through them and the two other side rings.



5. Continue folding the side rings up, and adding new rings for the entire length of your chain. Notice how even in these pictures it has scrunched together.

