

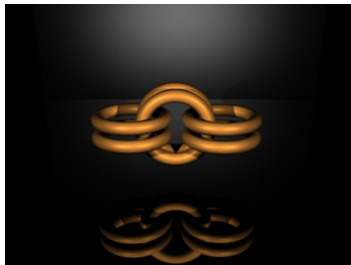
By: RJ Korvemaker

*Custom. Handmade. Chainmaille Jewelry*

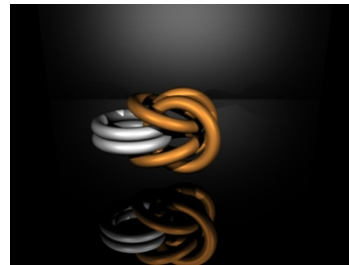
**Rings Sizes:** This tutorial is made with; 18swg (1.2mm WD), 4.0mm ID rings (AR 3.3).

However any Rings with an AR between 3.3 and 4.2 will work. , you may have to add more connector rings to keep everything tight though.

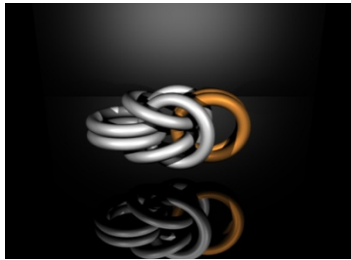
1. Create a 2 in 2 chain like below. The easiest way is to use one open ring to pick up 4 more rings before closing it, and then add an extra ring.



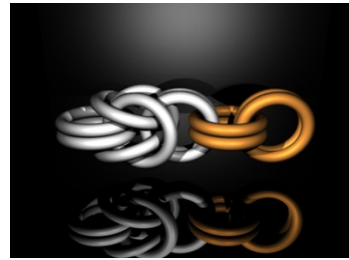
2. Fold the rings on the right back so then are over the rings on the left. Doing this creates a box shape in the rings.



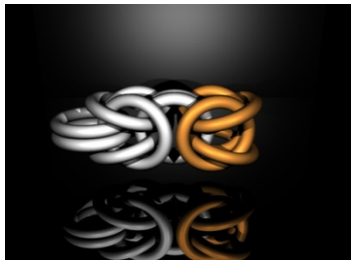
3. Add in the connector rings to hold the 'box' in place.



4. Add 4 more rings to the 2 you just added.



5. Fold back the end rings as before to create another box.



6. Add in more connectors, and then repeat from step 2 making the chain as long as you want.

